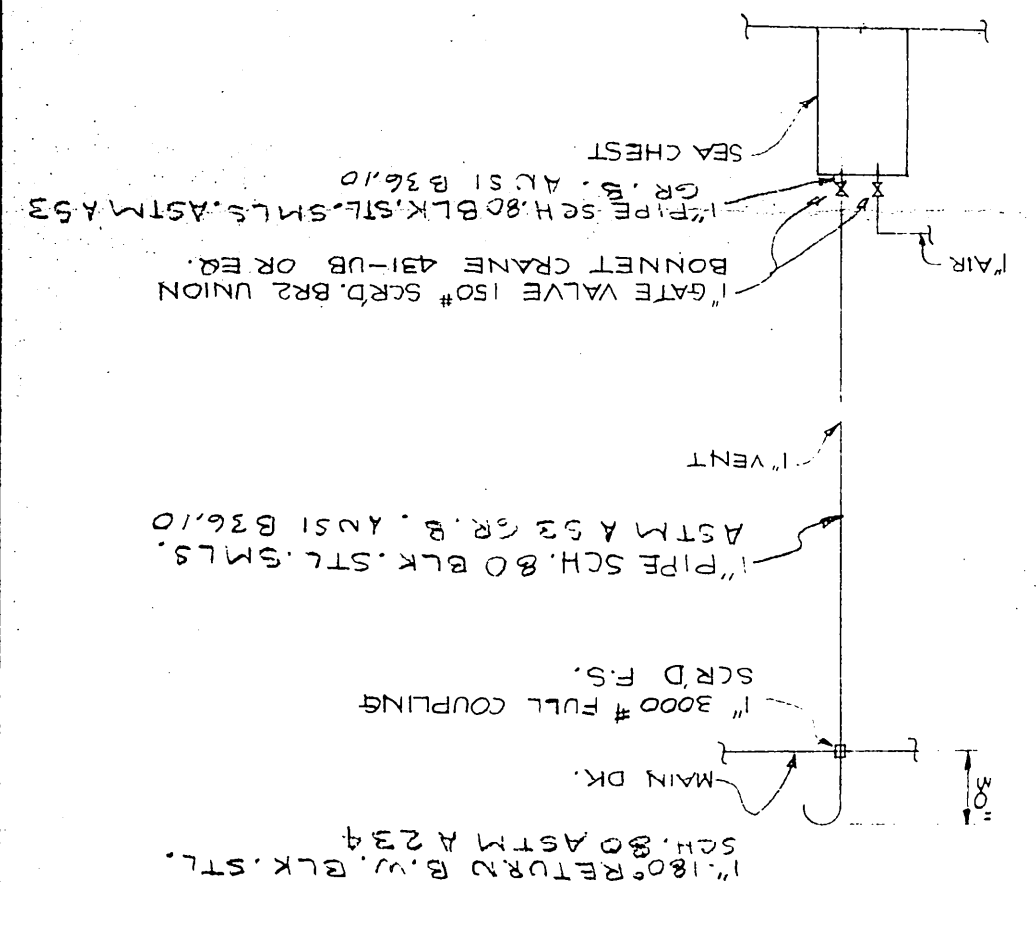


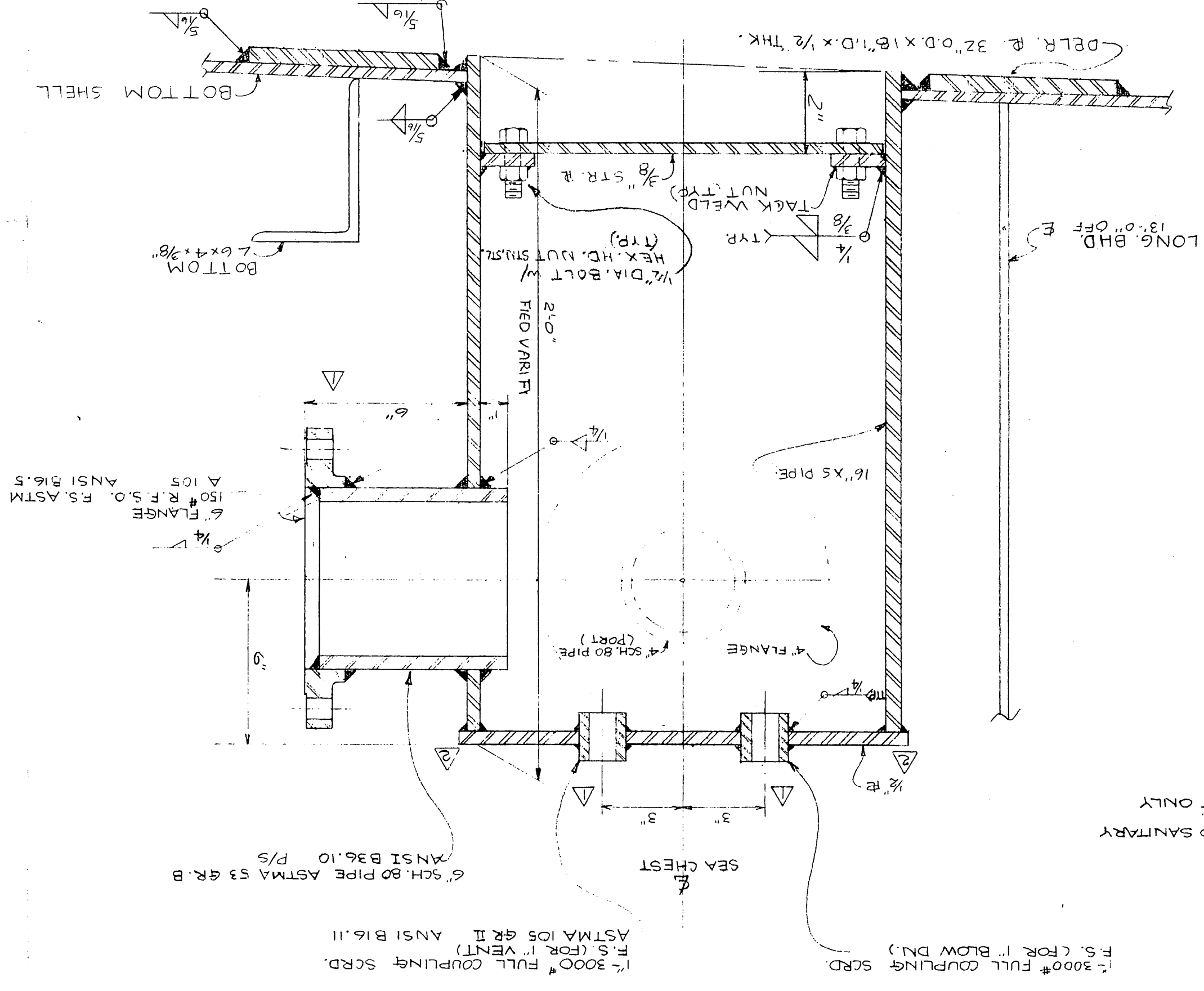
REV. MK.	DATE	DESCRIPTION
1	7-14-81	REVISED DWG. PER DATE GEORDES' H.N. FROM TIDE WATER MARINE
2	8/17/81	REVISED DWG. PER CONST GUARD'S MARKED UP PRINT
		MARKED UP PRINT



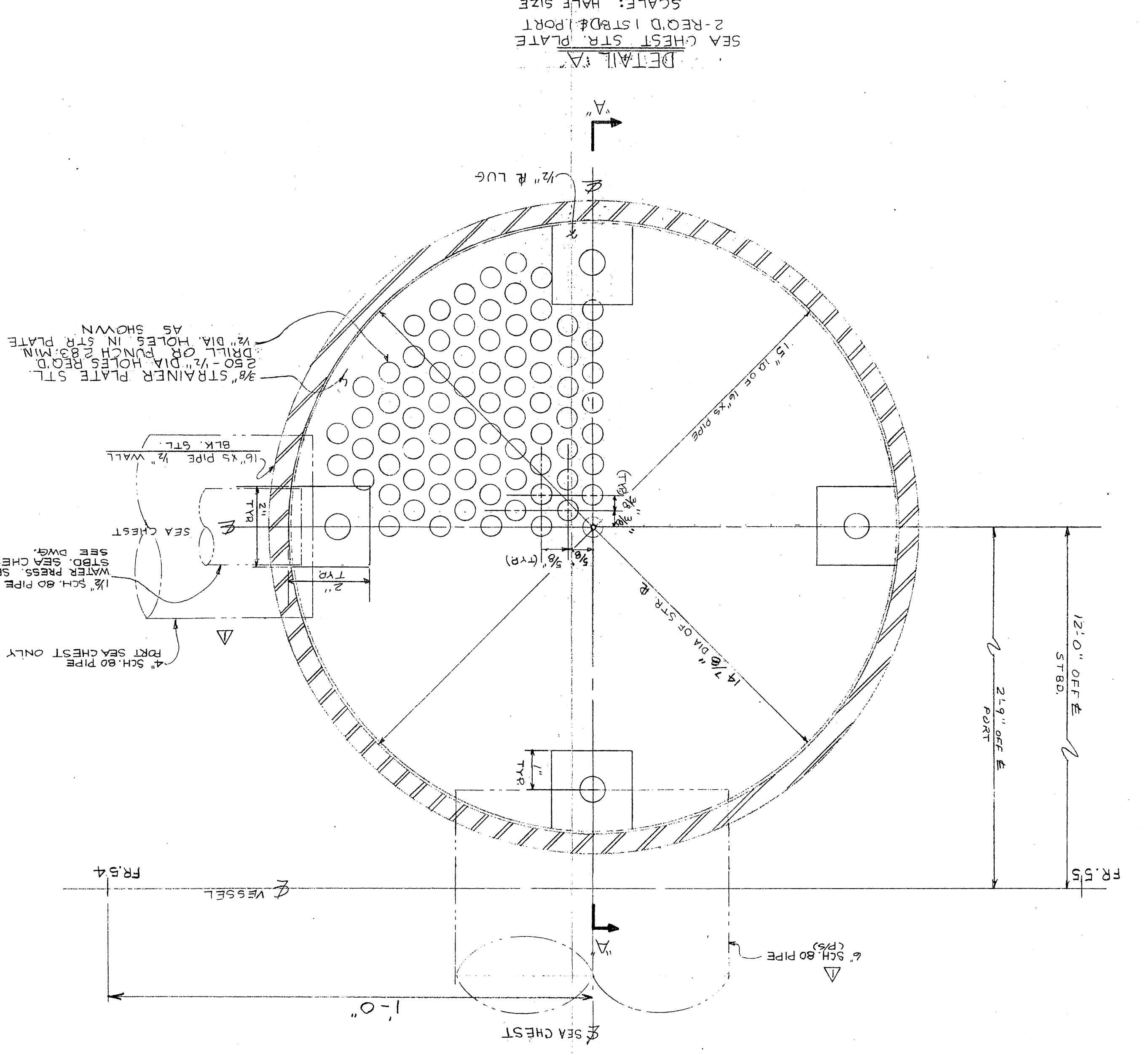
VENT & AIR BLOW DN. PIPING
FOR SEA CHEST
SCALE: 3/4" = 1'-0"

NOTES
1 STRAINER PLATES TO BE GALVANIZED AFTER FABRICATION
2 PROVIDE 2(TWO) ANODES IN EACH SEA CHEST

DESIGN ASSOCIATES, INC. MARINE ENGINEERS NEW ORLEANS, LA.	TIDEWATER MARINE SERVICE	14'-3"-0" x 36'-0" x 10'-0" SEISMIC VESSEL	SEA CHEST DET.
Drawn: BERTUCCI, M. Checked: P.C.B. Date: 6-22-81	Traced: Date:	Scale: NOTED	Sheet 1 Of 1 Drawing No. C2062-34 Revision Mark



SECTION A-A
SCALE 3/4" = 1'-0"
LKG AFT.
STR. SEA CHEST SHOWN
PORT SIM. OP. HND.



DETAIL A
SEA CHEST STR. PLATE
2-RECD 1 STR. PLATE
SCALE: HALF SIZE

CONST.